

FOR LEASE
3,970 – 7,020 SF

Flamingo Pines Plaza

12520 Pines Blvd
Pembroke Pines, FL 33027



Juan P. Restrepo



(954) 866-0246



juan@jblmgmt.com

Javier Masferrer



(954) 364-7585



javier@jblmgmt.com



JBL
ASSET MANAGEMENT

FOR LEASE
3,970 – 7,020 SF

Flamingo Pines Plaza

12520 Pines Blvd
Pembroke Pines, FL 33027



AVAILABILITIES

- » 3,970 SF available space
- » Up to 7,020 SF in proposed interior outparcel

PROPERTY HIGHLIGHTS

- » Walmart Supercenter shadow-anchored shopping center located in the highly desirable community of Pembroke Pines, Broward County, FL
- » Features a diverse mix of retail, restaurant and service uses, Goodwill and USPS
- » Situated at the heavily-trafficked intersection of Pines Blvd. and Flamingo Rd. (+119,000VPD)
- » Property enjoys a prominent, infill and highly accessible regional location just east of an Interstate-75 interchange and immediately adjacent to a high-volume Walmart Supercenter, Publix and the 1.1 million SF, GGP-owned, super regional Pembroke Lakes Mall

TRAFFIC COUNTS

- » 65,000 AADT on Pines Blvd
- » 56,000 AADT on S Flamingo Rd

DEMOGRAPHICS

	1-Mile	3-Mile	5-Mile
Population:	19,009	134,929	378,717
Households	10,288	50,539	127,020
Average HH Income	\$48,205	\$89,276	\$112,018
Daytime Population	20,958	126,581	\$91,468

Juan P. Restrepo



(954) 866-0246



juan@jblmgmt.com

Javier Masferrer



(954) 364-7585



javier@jblmgmt.com

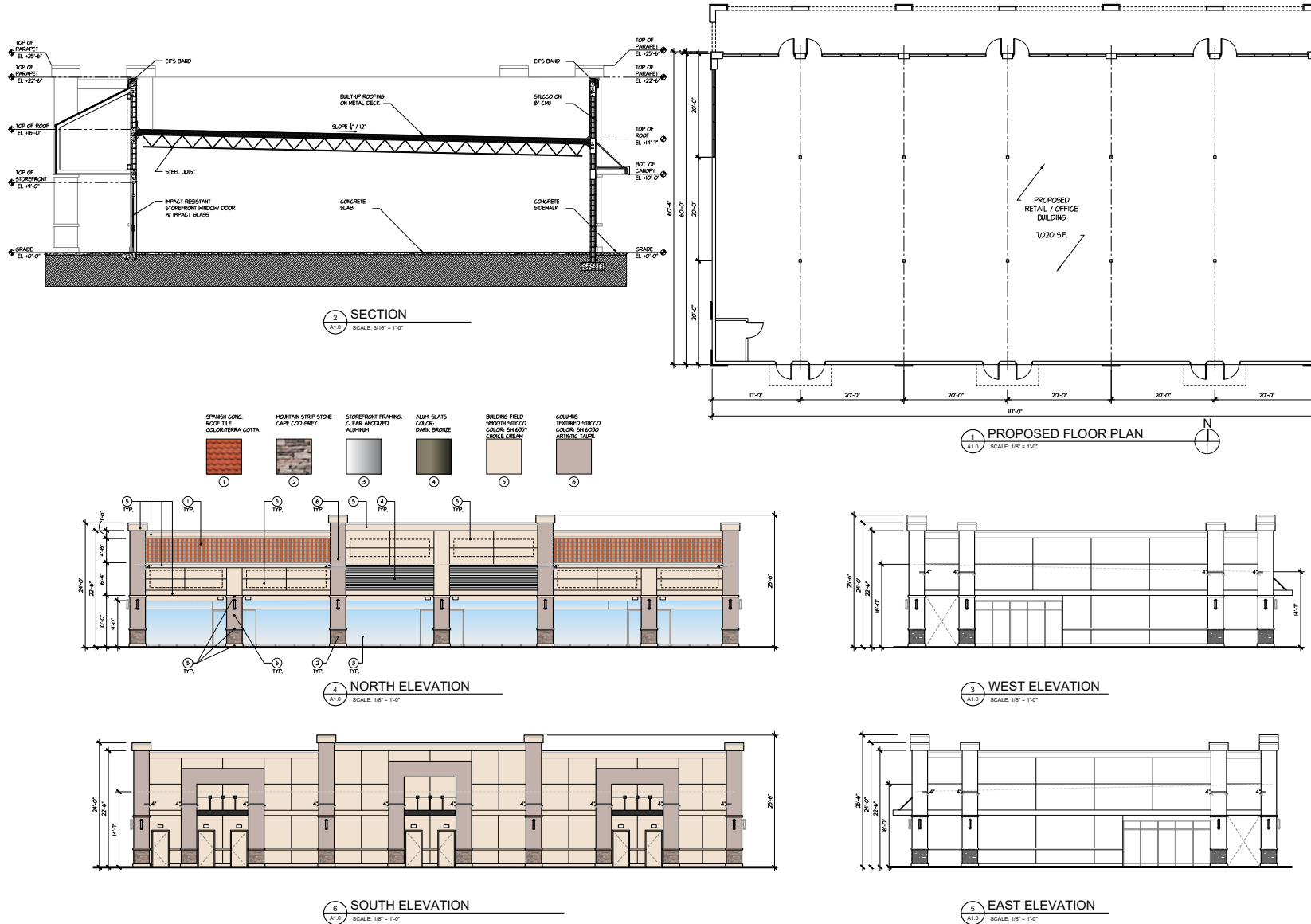
JBL
ASSET MANAGEMENT

FOR LEASE
3,970 – 7,020 SF

Flamingo Pines Plaza

12520 Pines Blvd
Pembroke Pines, FL 33027

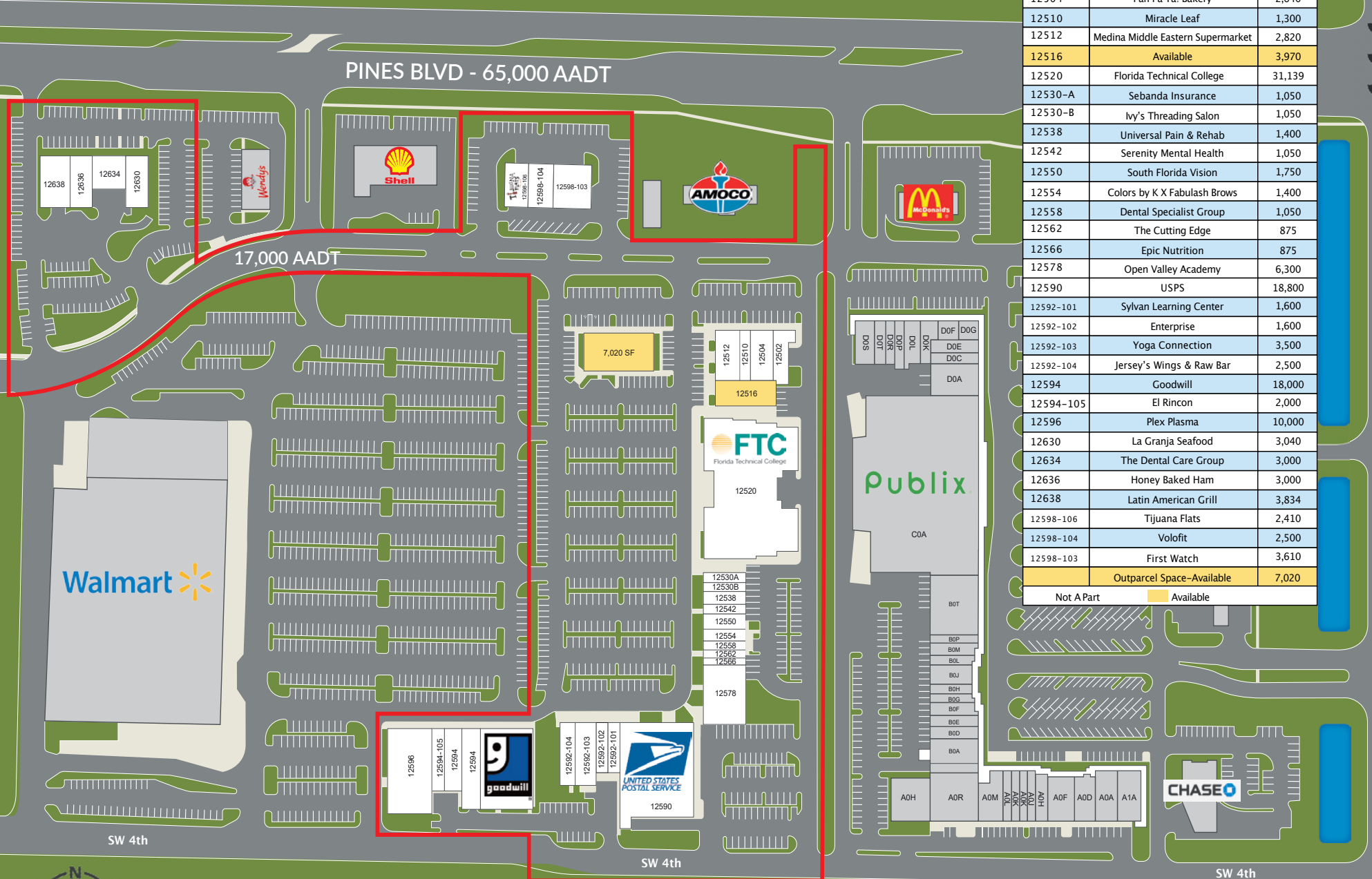
PROPOSED SITE PLAN AND ELEVATION FOR INTERIOR OUTPARCEL BUILDING (Q2 2023 DELIVERY)



FLAMINGO PINES PEMBROKE PINES, FL

Suite	Tenant	SQ FT
12502	Mikan Japanese	1,369
12504	Pan Pa'Ya! Bakery	2,640
12510	Miracle Leaf	1,300
12512	Medina Middle Eastern Supermarket	2,820
12516	Available	3,970
12520	Florida Technical College	31,139
12530-A	Sebanda Insurance	1,050
12530-B	Ivy's Threading Salon	1,050
12538	Universal Pain & Rehab	1,400
12542	Serenity Mental Health	1,050
12550	South Florida Vision	1,750
12554	Colors by K X Fabulash Brows	1,400
12558	Dental Specialist Group	1,050
12562	The Cutting Edge	875
12566	Epic Nutrition	875
12578	Open Valley Academy	6,300
12590	USPS	18,800
12592-101	Sylvan Learning Center	1,600
12592-102	Enterprise	1,600
12592-103	Yoga Connection	3,500
12592-104	Jersey's Wings & Raw Bar	2,500
12594	Goodwill	18,000
12594-105	El Rincon	2,000
12596	Plex Plasma	10,000
12630	La Granja Seafood	3,040
12634	The Dental Care Group	3,000
12636	Honey Baked Ham	3,000
12638	Latin American Grill	3,834
12598-106	Tijuana Flats	2,410
12598-104	Volofit	2,500
12598-103	First Watch	3,610
	Outparcel Space--Available	7,020

Not A Part Available



PINES BLVD - 65,000 AADT

17,000 AADT

7,020 SF

Walmart

FTC

Florida Technical College

Publix

goodwill

UNITED STATES
POSTAL SERVICE

CHASE



S. FLAMINGO RD - 56,000VPD

SW 4th

SW 4th

SW 4th

FOR LEASE
3,970 - 7,020 SF

Flamingo Pines Plaza

12520 Pines Blvd
Pembroke Pines, FL 33027



Juan P. Restrepo

(954) 866-0246

juan@jblmgmt.com

Javier Masferrer

(954) 364-7585

javier@jblmgmt.com

JBL
ASSET MANAGEMENT